

GMA J1900A26 Mother board



1 :

1.1

1.2

1.3

1.5

2 :

2.1 CPU

2.2

2.3

2.4 (DC ATX)

2.5 / / /

3 : BIOS

3.2 ADVANCED MENU

3.3 Chipset MENU

3.4 Security MENU

3.5 BOOT MENU

3.6 Save&Exit MENU

4 :

第 1 部分：引言

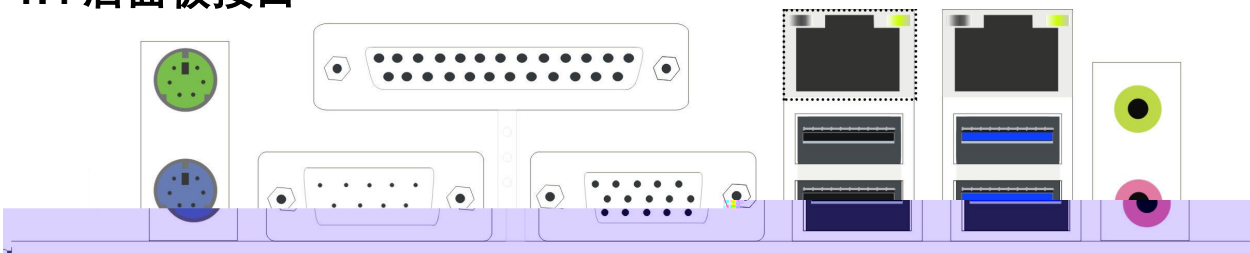
1.1 开始使用之前

1.2 包装清单

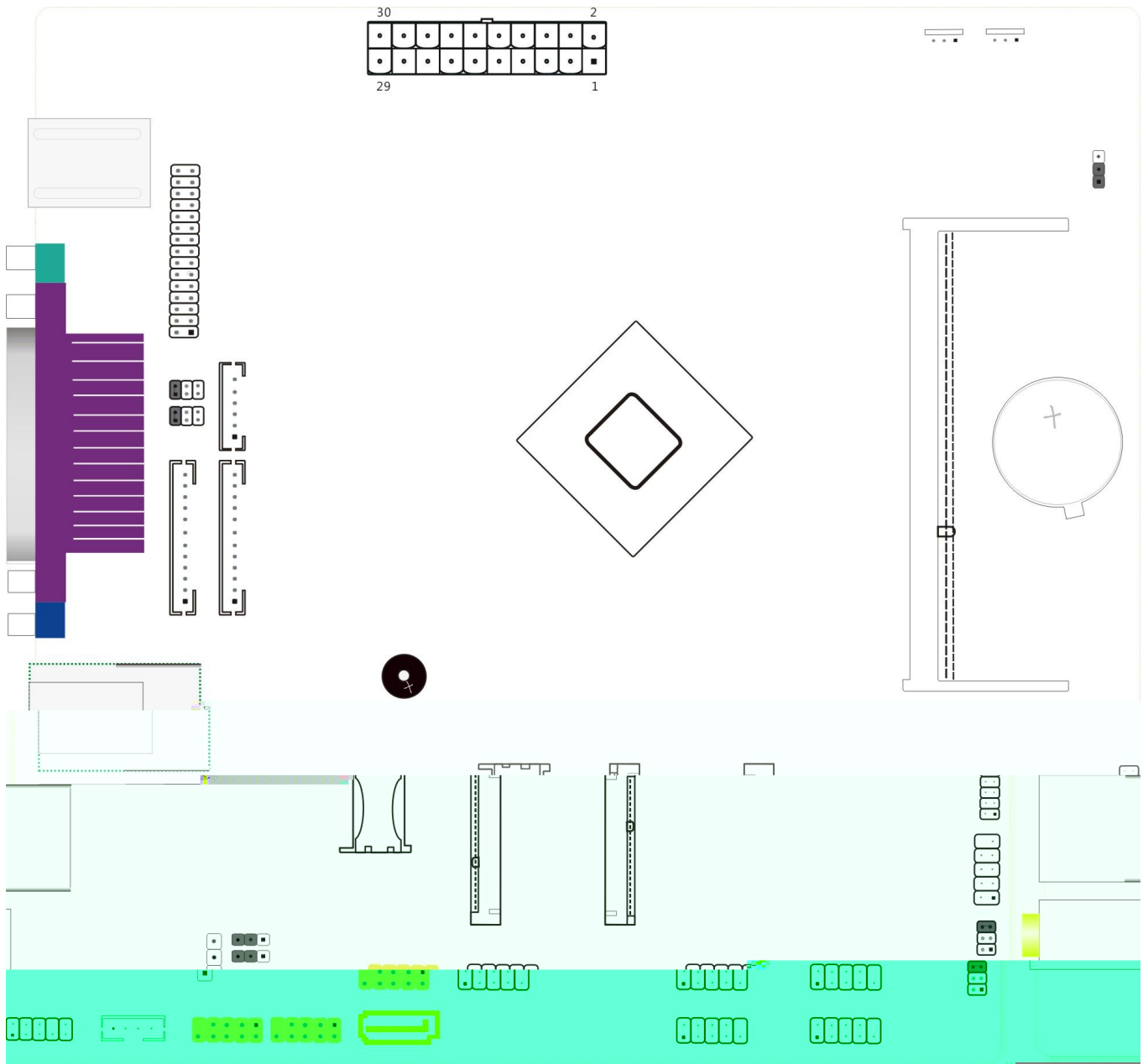
1.3 主板规格



1.4 后面板接口



1.5 主板摆位图

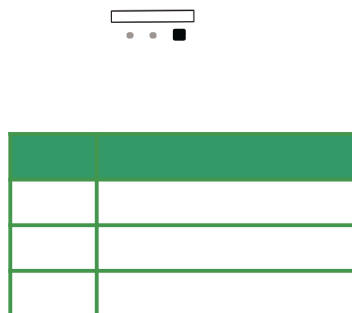
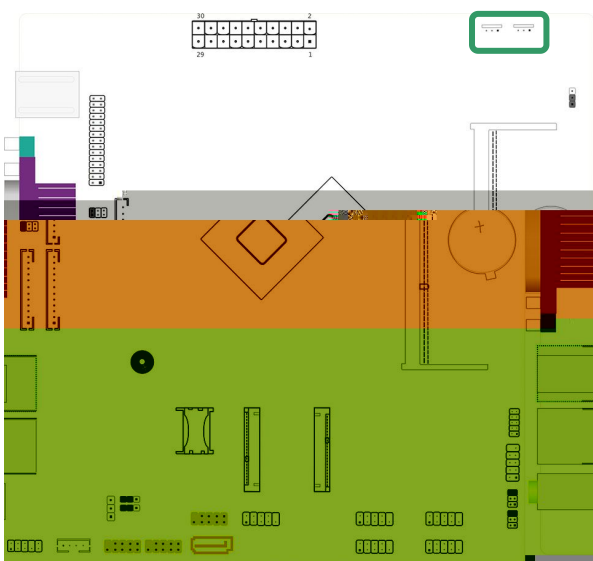


注:

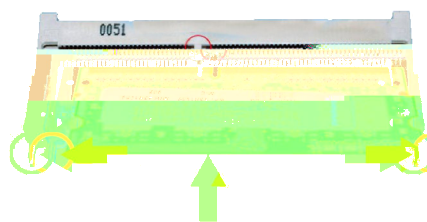
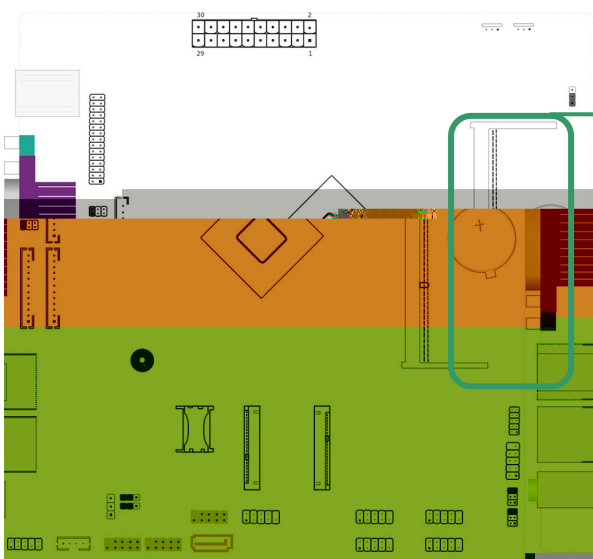
第 2 部分：安装

2.1 CPU

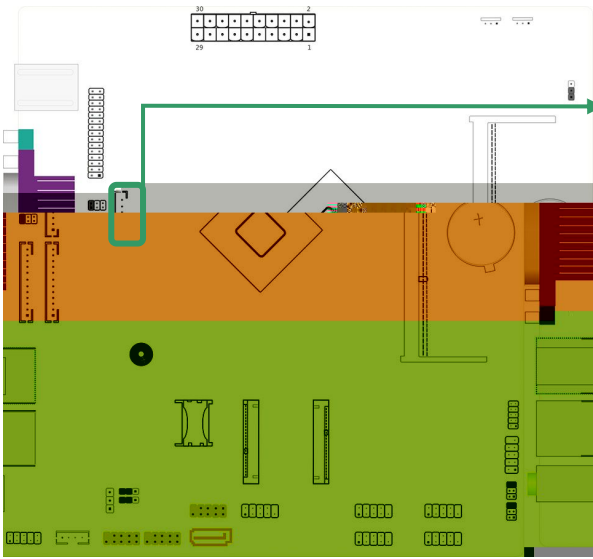
2.2 风扇插针

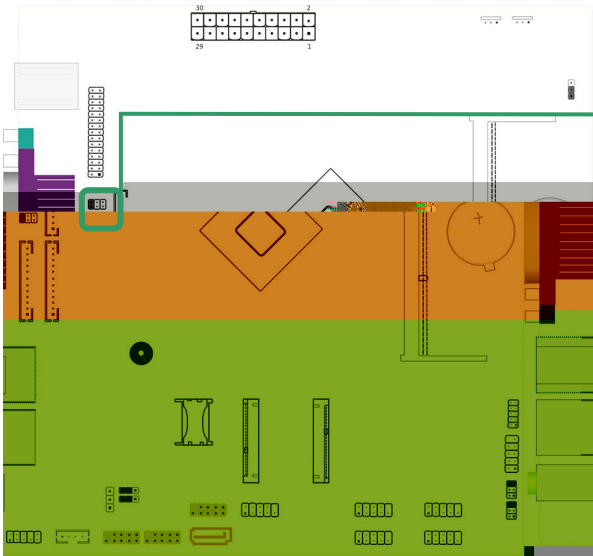


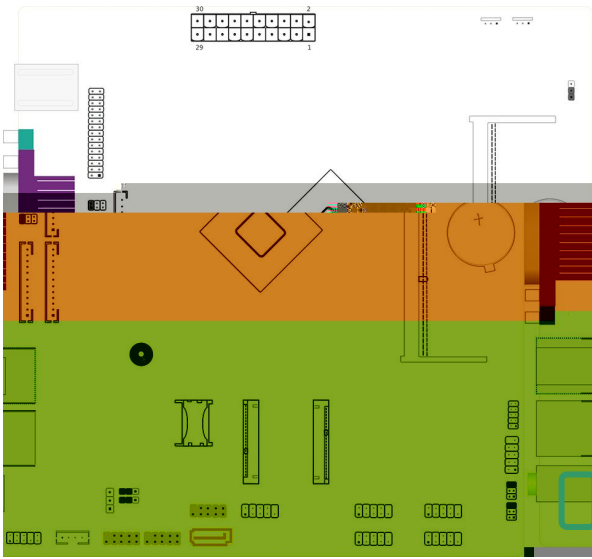
2.3 系统内存



2.4 电源供应(主板提供 DC 或 ATX 供电)

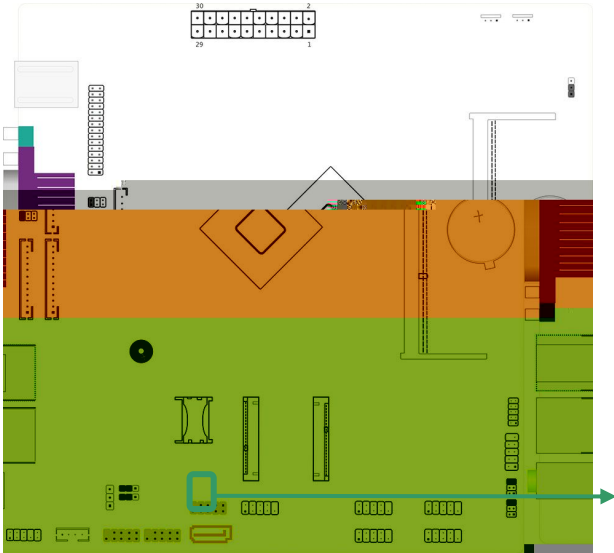




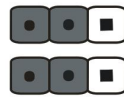




注: 以上 COM1-6 不支持 RI 唤醒



COM1		

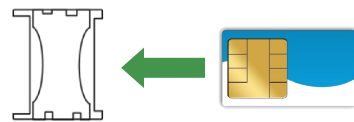
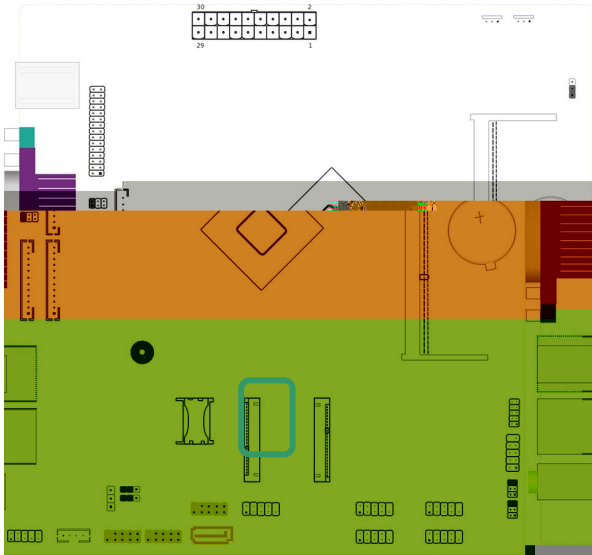
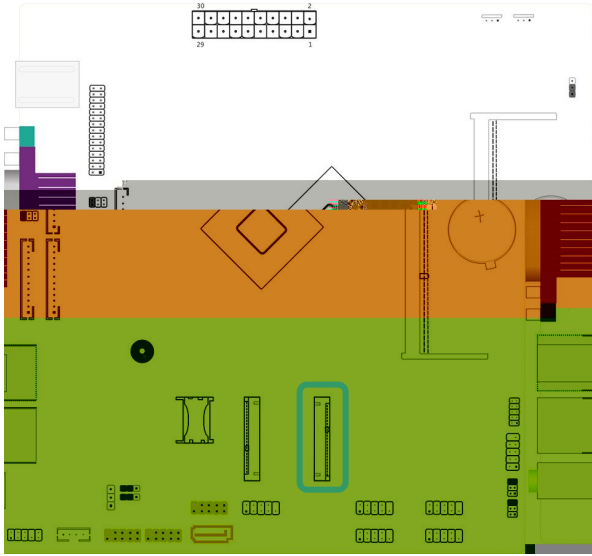


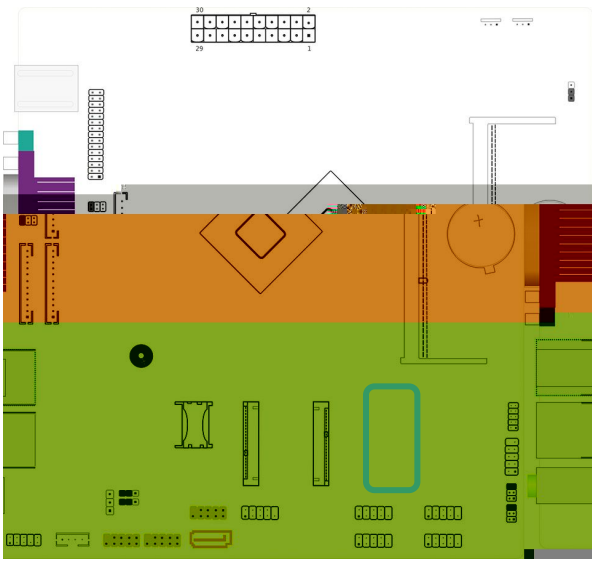




: CONS

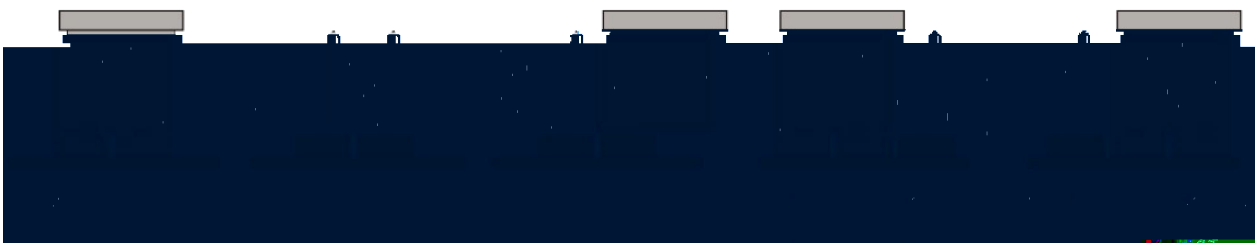
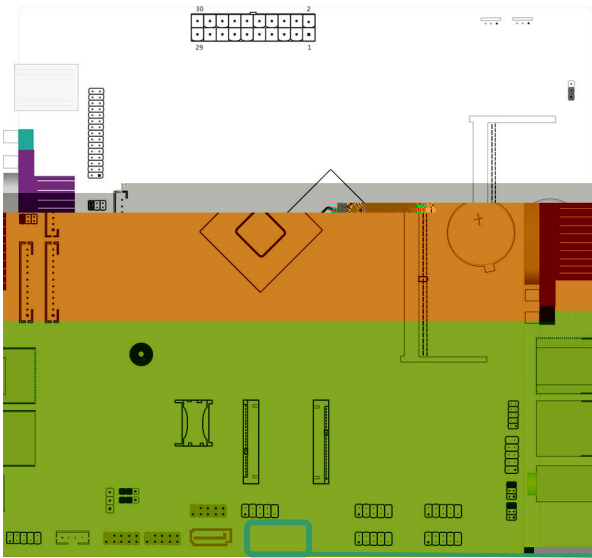
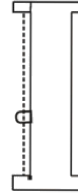
CONS :





x

x



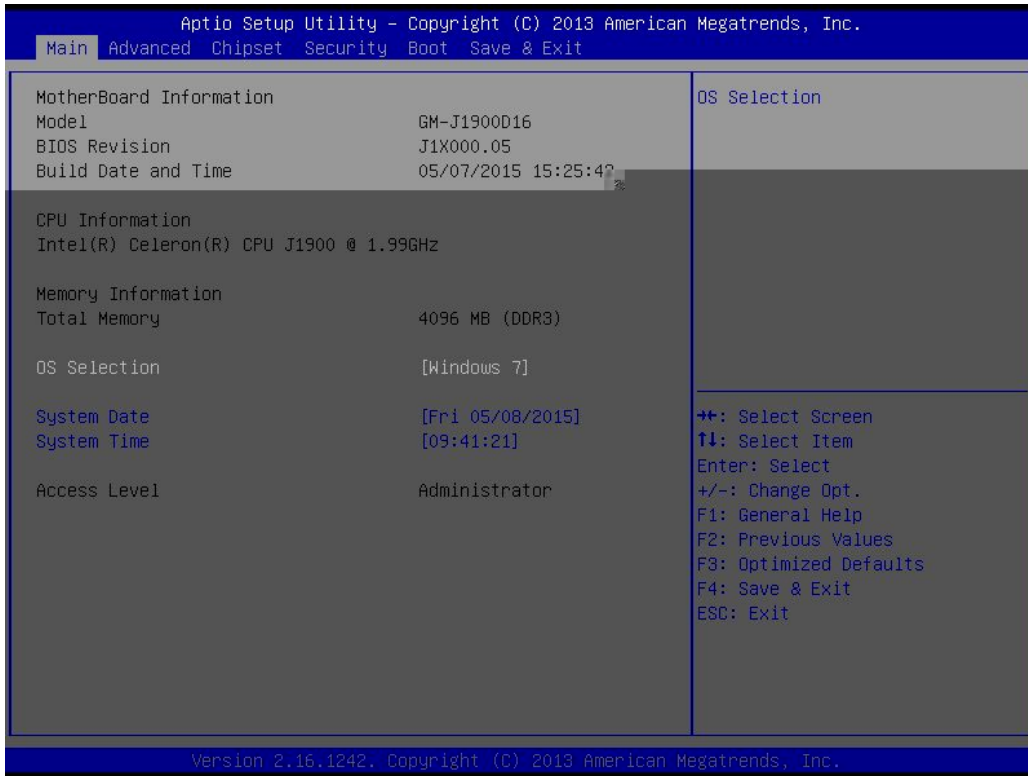
第 3 部分: BIOS 设置

BI OS

(主界面)

AMI BIOS

<Enter>



BIOS

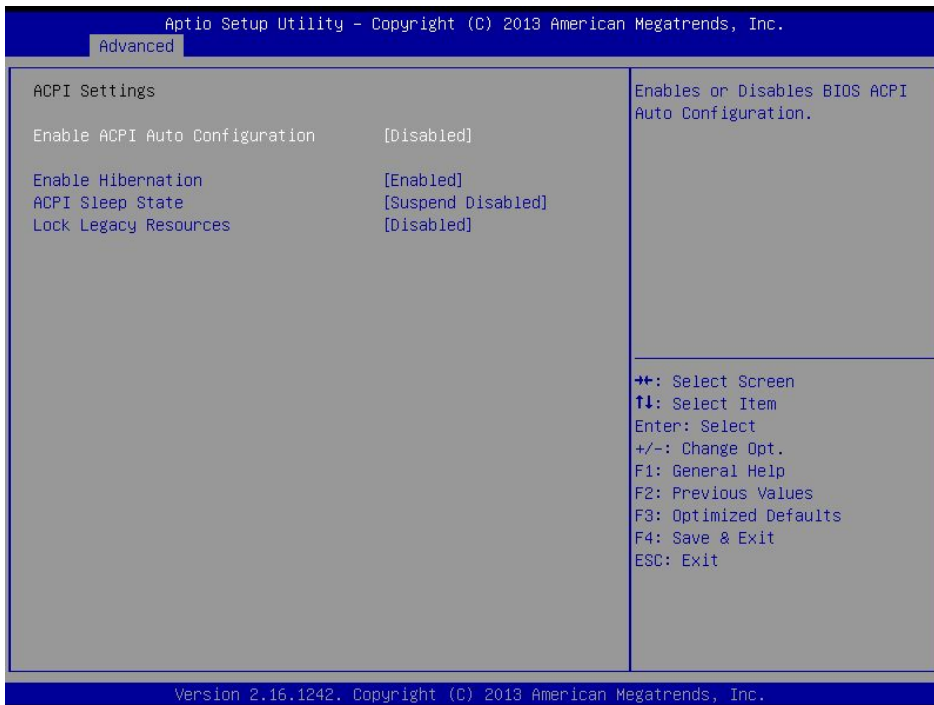
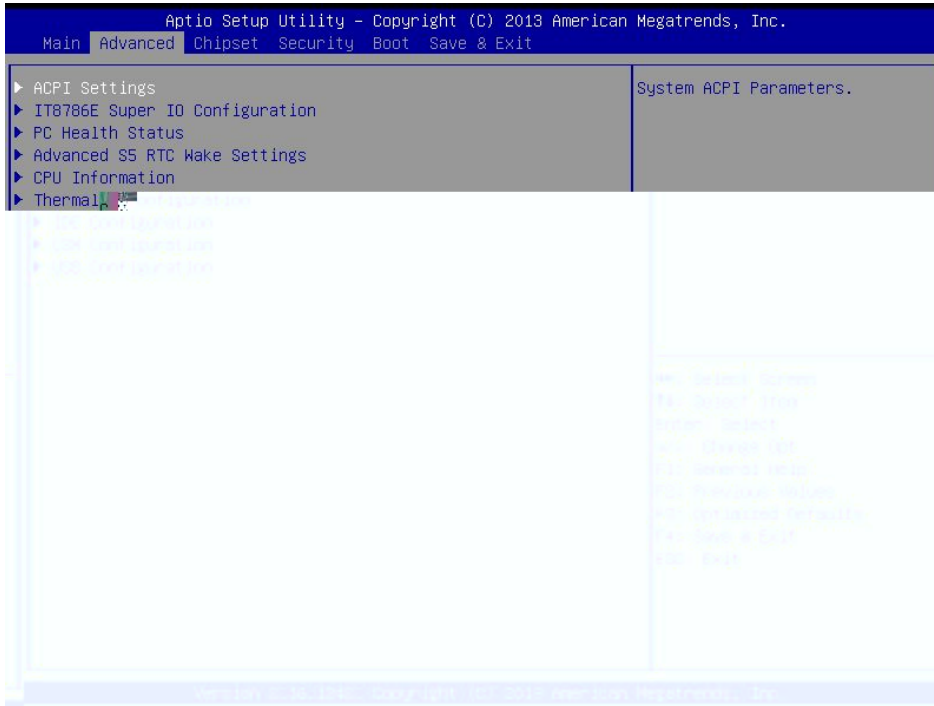
BIOS

Windows 7 Windows 8.X

* / /

: :

3.2 ADVANCED MENU (高级功能设置菜单)



Enable Hibernation

Enabled

Disabled

Enabled

ACPI Sleep State ACPI

ACPI

Suspend Disabled

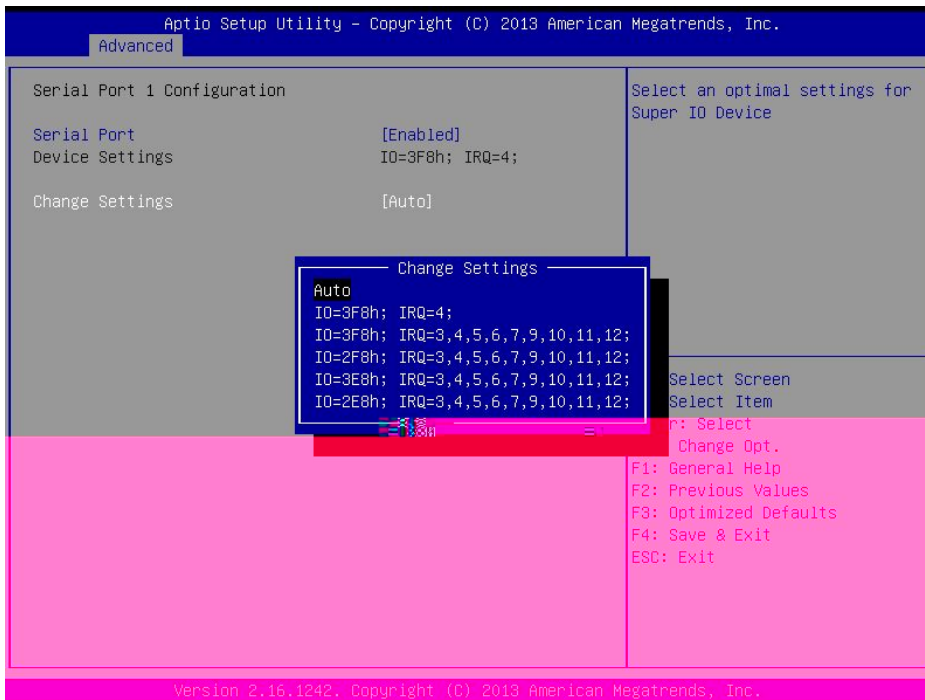
IT8786E Super IO Configuration(IO)



Watch dog Controller ()
 Disabled() Second Minute

Restore AC Power Loss By IO (IO)
 Power Off() Power On Last State

Serial Port Configuration



Serial PortX : [Enabled] , [Disabled]

Device Settings [IO=3F8h;IRQ=4]

Change Settings 6 [Auto]

Parallel Port Configuration

Advanced

Parallel Port Configuration		Change the Printer Port mode.
Parallel Port	[Enabled]	
Device Settings	IO=378h; IRQ=5;	
Change Settings	[Auto]	
Device Mode	[Standard Parallel P...]	

Device Mode

- Standard Parallel Port mode(SPP)
- EPP Mode
- ECP Mode
- EPP mode & ECP mode

Select Screen
Select Item
Enter: Select
+/-: Change Opt.
F1: General Help
F2: Previous Values
F3: Optimized Defaults
F4: Save & Exit
ESC: Exit

CPU Information CPU



Socket 0 CPU Information (0 CPU)

CPU

Active Processor Cores[ALL]
ALL, 1

Limit CPUID Maximum[Disabled]
CPUID [Enabled] [Disabled] [Enabled]

Execute Disable Bit [Enabled]
No-Excution Page Protection [Enabled] XD 0
[Disabled][Enabled]

Hardware Prefetcher [Enabled]
[Enabled] , [Disabled]

Adjacent Cache Line Prefetch [Enabled]
/ [disabled] , 64 128
(). [enable]
:[Enabled] , [Disabled]

Intel Virtualization Technology [Disabled]
[Disabled][Enabled]

Thermal Configuration ()

Aptio Setup Utility - Copyright (C) 2013 American Megatrends, Inc.

Advanced

Thermal Configuration Parameters		This value controls the temperature of the ACPI critical Trip Point in which the OS will shut the system off.
Critical Trip Point	[90 C]	
Passive Trip Point	[85 C]	
Dynamic Platform&Thermal Framework		
DPTF	[Disabled]	
CPU Sensor Participant		
Critical	[70 C]	Ambient Sensor
Passive	[60 C]	Critical
		Passive
		DDR Sensor Part
		Critical
		Passive
Processor		
	[Disabled]	Super Debug
	[Disabled]	Current Logical
	[P0]	Start P-State
	[25%]	Step size
Setting	[CORE offlining]	Power Control S
Control Setting	[CORE offlining]	Performance Con
	[Enabled]	DRS

Version 2.16.1242. Copyright (C) 2013 American Megatrends, Inc.

IDE Configuration (IDE)

Aptio Setup Utility - Copyright (C) 2013 American Megatrends, Inc.

Advanced

IDE Configuration		Enable / Disable Serial ATA
Serial-ATA (SATA)	[Enabled]	
SATA Test Mode	[Disabled]	
SATA Speed Support	[Gen2]	
SATA ODD Mode	[AHCI Mode]	SATA
1-ATA Port 0	[Enabled]	Serial
Port0 HotPlug	[Disabled]	SATA
1-ATA Port 1	[Enabled]	Serial
Port1 HotPlug	[Disabled]	SATA
Port0 Present		SATA
		Not P
Port1 Present		SATA
		Not P

Version 2.16.1242. Copyright (C) 2013 American Megatrends, Inc.

CSM Configuration CMS

Aptio Setup Utility - Copyright (C) 2013 American Megatrends, Inc.

Advanced

Compatibility Support Module Configuration		Enable/Disable CSM Support.
CSM Support	[Enabled]	
CSM16 Module Version	07.71	
GateA20 Active	[Upon Request]	
Option ROM Messages	[Force BIOS]	
INT19 Trap Response	[Immediate]	
Boot option filter	[UEFI and Legacy]	
Option ROM execution order		
Storage	[UEFI only]	++: Select Screen ↑↓: Select Item Enter: Select +/-: Change Opt. F1: General Help F2: Previous Values F3: Optimized Defaults F4: Save & Exit ESC: Exit
Video	[Legacy only]	
Other PCI devices	[UEFI first]	

Version 2.16.1242. Copyright (C) 2013 American Megatrends, Inc.

USB Configuration (USB)

USB Devices

None

Aptio Setup Utility - Copyright (C) 2013 American Megatrends, Inc.

Advanced

USB Configuration		Enables Legacy USB support. AUTO option disables legacy support if no USB devices are connected. DISABLE option will keep USB devices available only for EFI applications.
USB Module Version	8.11.01	
USB Devices:	1 Drive, 1 Keyboard, 1 Mouse, 3 Hubs	
Legacy USB Support	[Enabled]	++: Select Screen ↑↓: Select Item Enter: Select +/-: Change Opt. F1: General Help F2: Previous Values F3: Optimized Defaults F4: Save & Exit ESC: Exit
USB Hand-off	[Enabled]	
USB Mass Storage Driver Support	[Enabled]	
USB hardware delays and time-outs:		
USB transfer time-out	[20 sec]	
Device reset time-out	[20 sec]	
Device power-up delay	[Auto]	
Mass Storage Devices:		
Maximum USB 2.0 RecoveryFF	[Auto]	

Version 2.16.1242. Copyright (C) 2013 American Megatrends, Inc.

Legacy USB Support [Enabled]

USB

[Auto]

USB

USB

[Disabled]

USB

USB

[Disabled] [Enabled] [Auto]

XHCI HAND-OFF [Enabled]

EHCI HAND-OFF EFI OS USB driver USB

Enabled, USB OS EFI XHCI USB2.0

EHCI Hand-off [Disabled]

EHCI hand-off [Disabled] [Enabled] Enabled,

USB OS EFI EHCI USB2.0

USB Mass Storage Driver Support [Enabled]

USB [Disabled] [Enabled]

USB Transfer time-out [20sec]

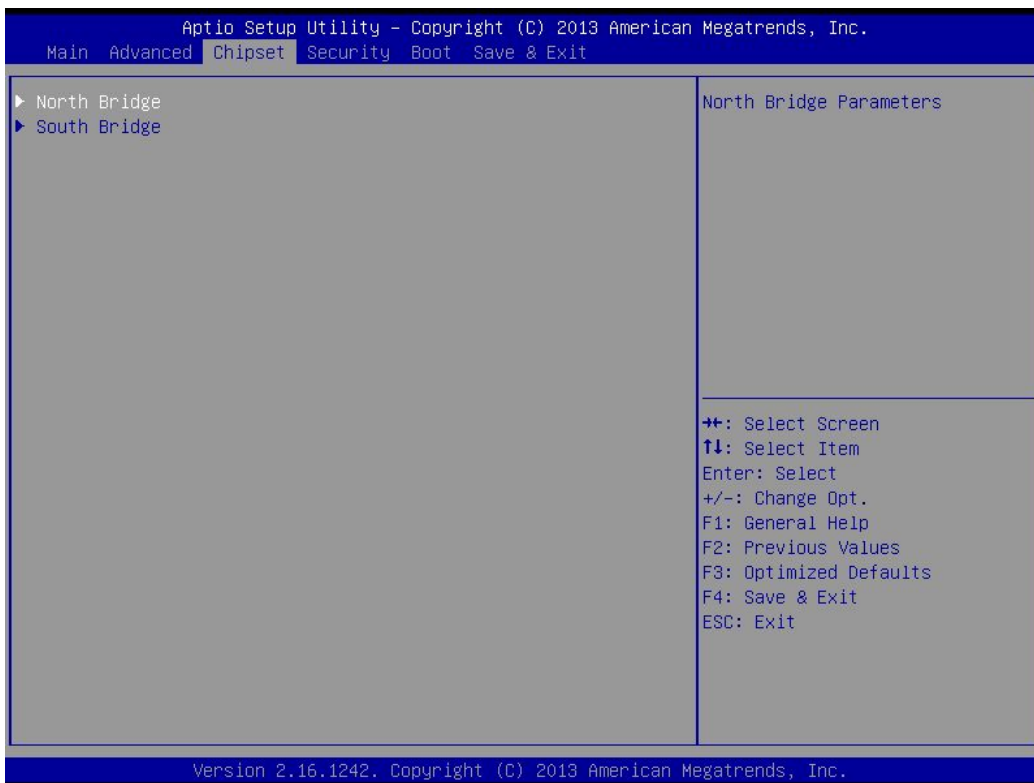
USB2.0 EFI

EFI OS USB

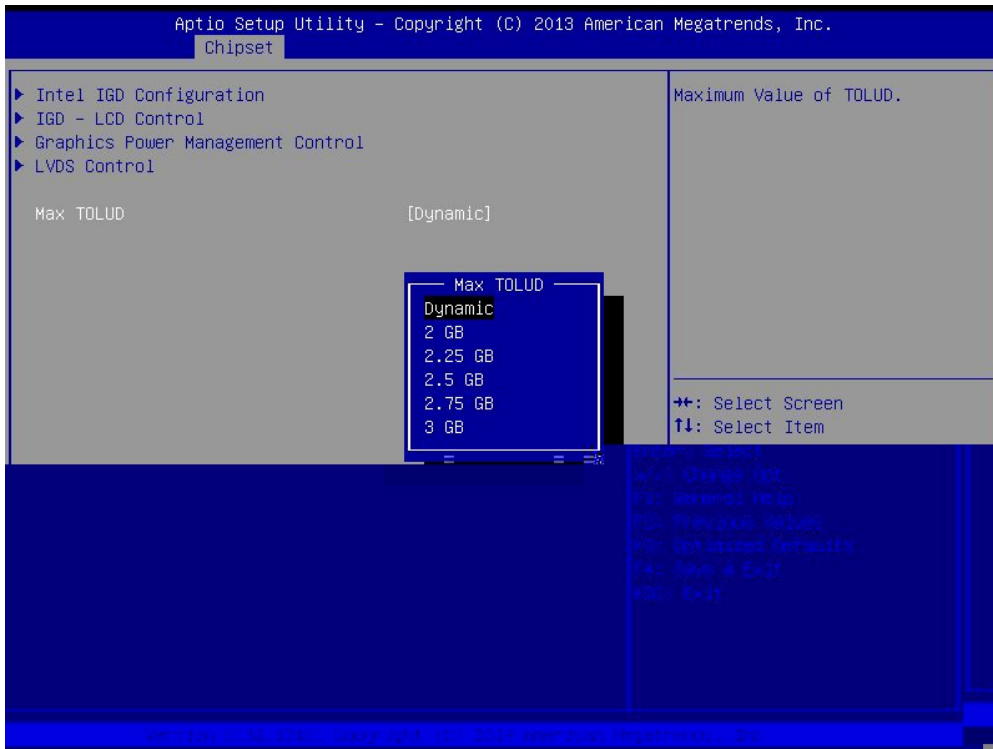
Device reset time-out [20sec]

USB2.0 reset EFI

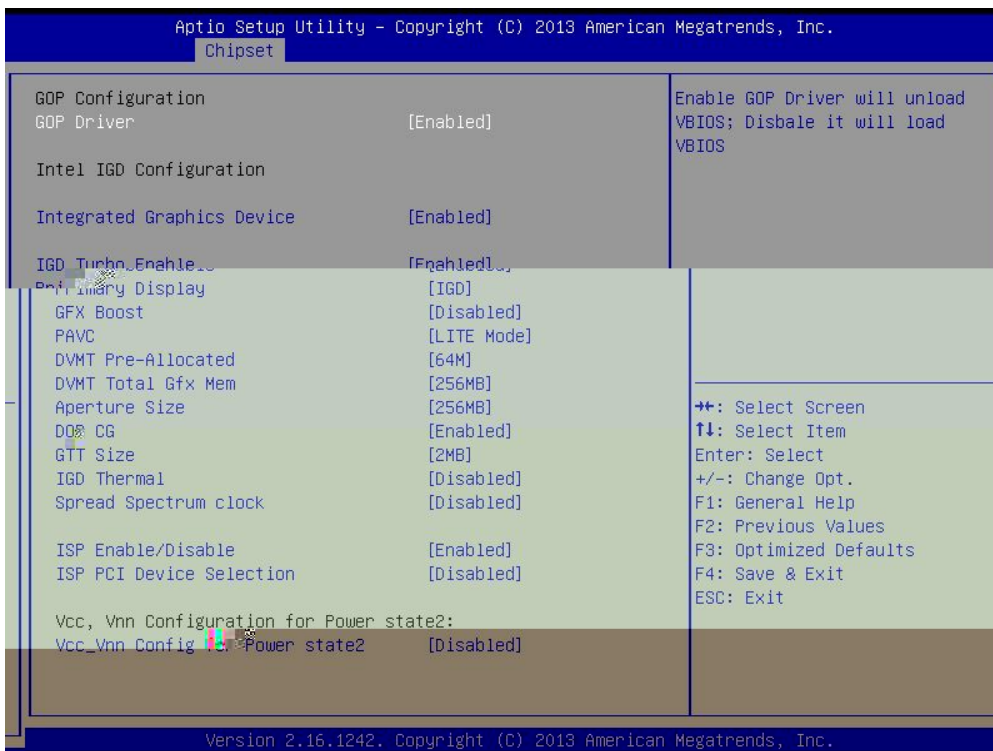
3.3 Chipset MENU (芯片组设置菜单)



North Bridge



Intel IGD Configuration



GOP Driver

Enabled() Disabled

Integrated Graphics Device

Enabled() Disabled

Primary Display

Auto IGD PCI SG

PAVC

[SERPENT Mode] [LITE Mode]

DVMT Pre-Allocate

, 64MB

DVMT Total Gfx Mem

256MB

LVDS Control LVDS

Aptio Setup Utility - Copyright (C) 2013 American Megatrends, Inc.
Chipset

LVDS Control	Select the Video Device which will be activated during POST. This has no effect if external graphics present. Secondary boot display selection will appear based on your selection. VGA modes will be supported only on primary display
Primary Display Boot Device [Auto]	
LVDS Resolution Type [Single 8 1024x768]	

Primary Display Boot Device

- Auto
- VGA&VGA_H1
- VGA_H2
- LVDS

Select Screen
Select Item
r: Select
+/-: Change Opt.
F1: General Help
F2: Previous Values
F3: Optimized Defaults
F4: Save & Exit
ESC: Exit

Version 2.16.1242. Copyright (C) 2013 American Megatrends, Inc.

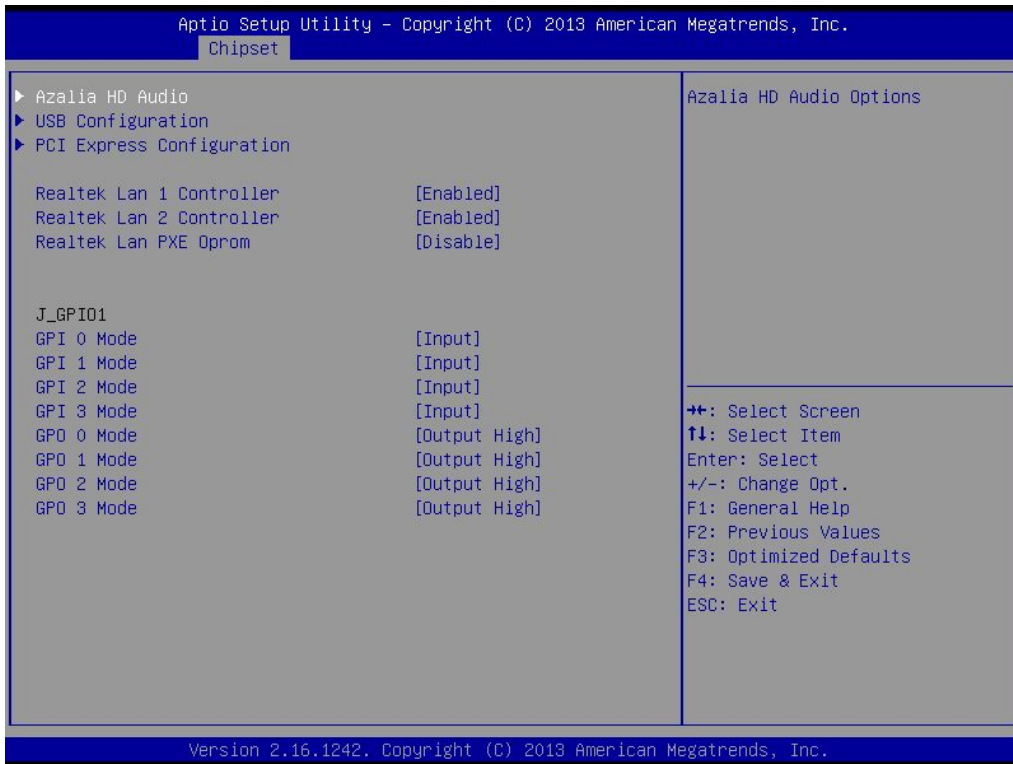
Primary Display Boot Device

Auto() VGA&VGA_H1 VGA_H2 LVDS

LVDS Resolution Type LVDS

LVDS Single 8 1024X768

South Bridge



Azalia HD Audio

Azalia HDMI codec Port [Enabled]

/ HDMI

USB Configuration (USB)

USB

Lan Controller [Enabled]

Lan PXE OpROM Boot [Do not launch]

[Do not launch] [UEFI only] [Legacy only]

Restore AC Power Loss [Power Off]

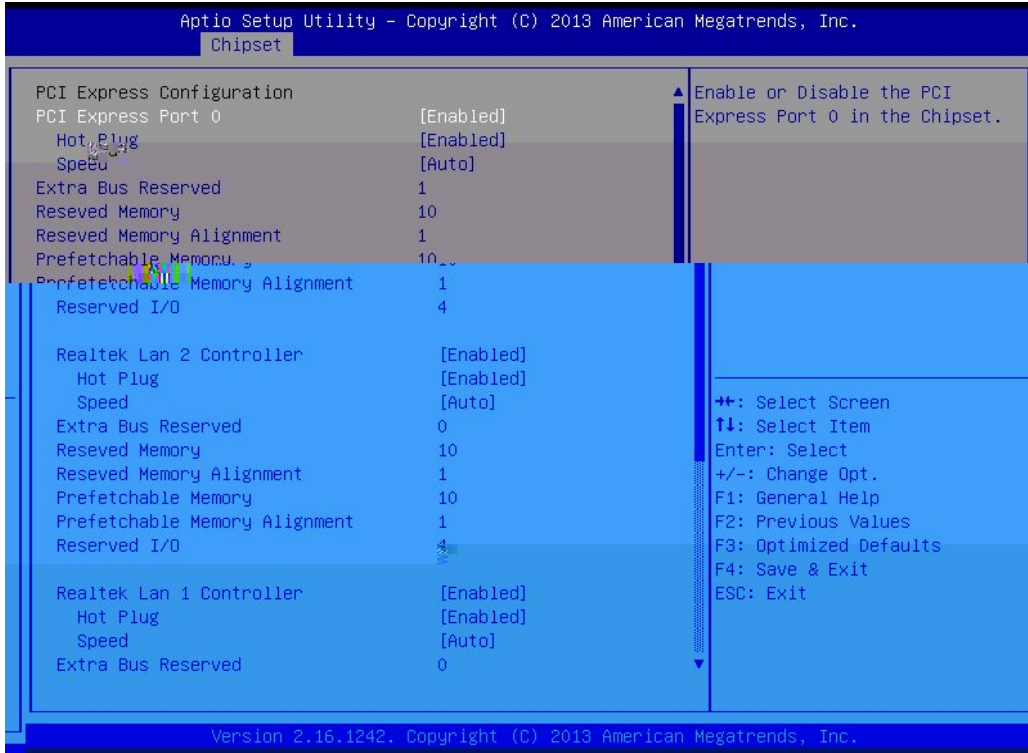
[Power Off] [Power On] [Last State]

[Power Off]

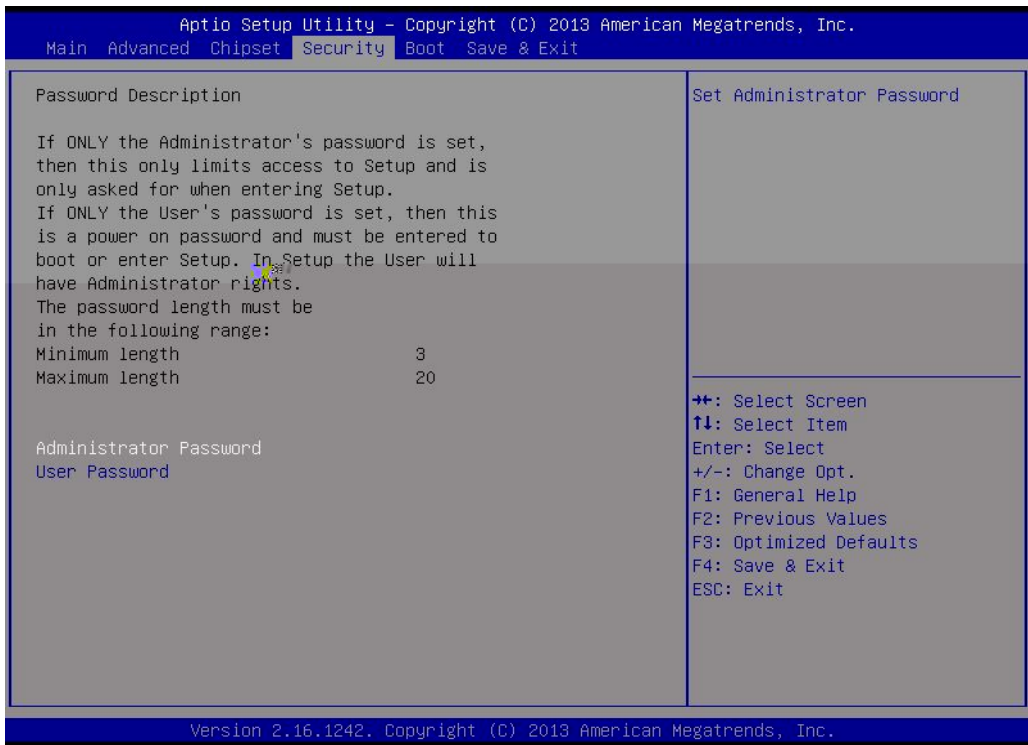
[Power On]

[Last State]

PCI Express Configuration



3.4 Security MENU（安全设置菜单）



Administrator Password

BIOS

BIOS

User Password
 BIOS

3.5 BOOT MENU (启动设置菜单)



Setup Prompt Timeout [1]

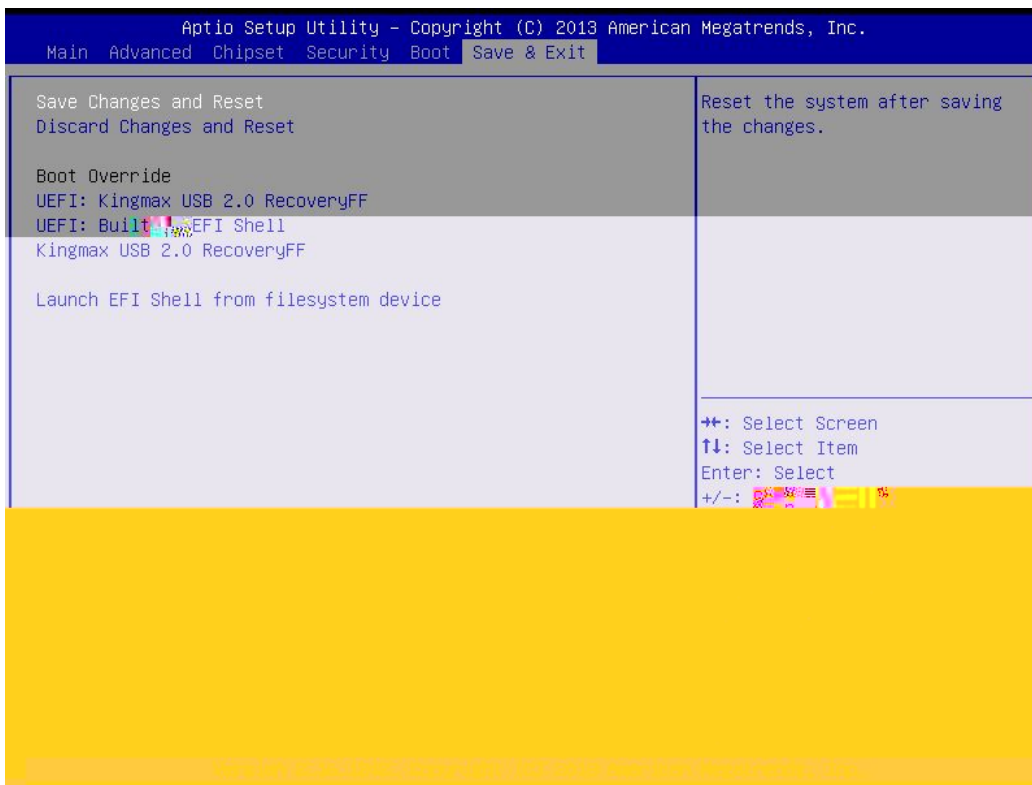
Bootup NumLock State [On]
 [On] [Off]

Full Screen Logo [Disabled]
 LOGO / [Enabled] [Disabled]

Fast Boot [Disabled]
 [Enabled] [Disabled]

Boot Option Priorities

3.6 Save&Exit MENU（保存和退出设置菜单）



Save Changes and Exit

4 :

4.1 芯片组驱动安装

4.2 显卡驱动安装

4.3 声卡驱动安装

4.4 网卡驱动安装